

Oil-injected screw compressor stage

EU75(II) Series

Air end data

| | |
|--|-------|
| power consumption at driving | |
| shaft recommended [kW] | 75 |
| volume flow max. [m ³ /min] | 15.99 |
| discharge pressure max. [bar a] | 15 |
| male rotor speed max. [rpm] | 3742 |
| lobe combination | 5/6 |



Oil-injected screw compressor stage

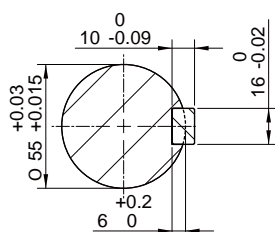


EU75G(II)

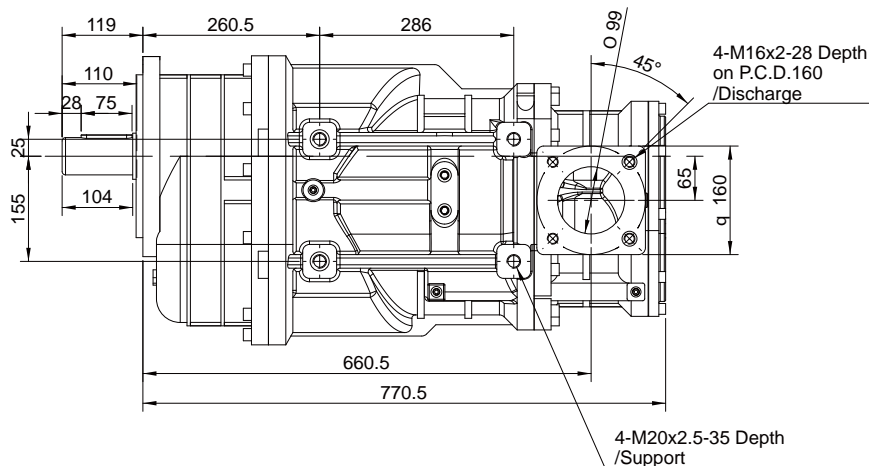
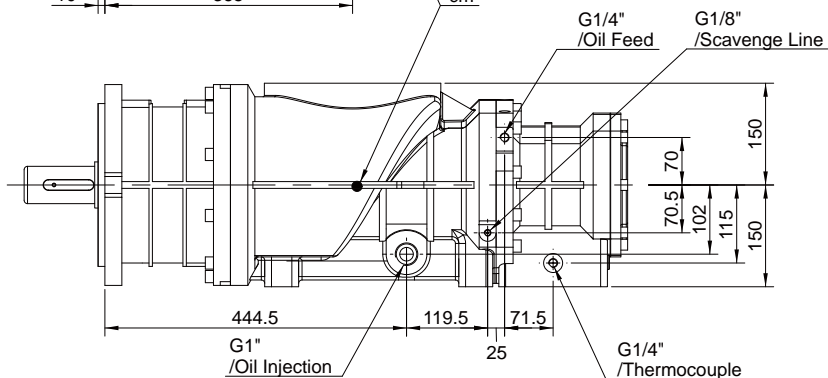
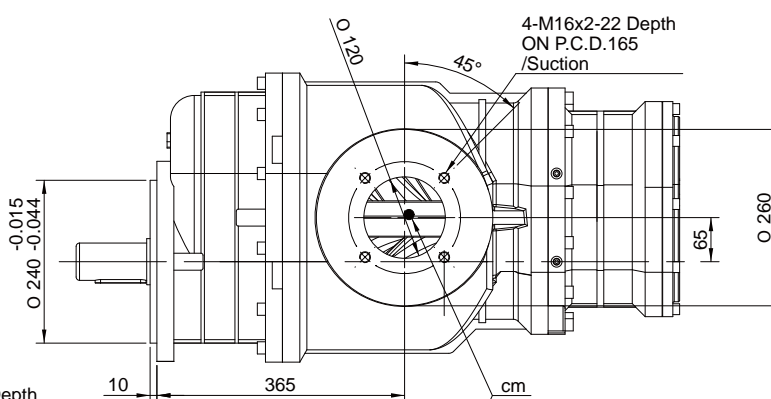
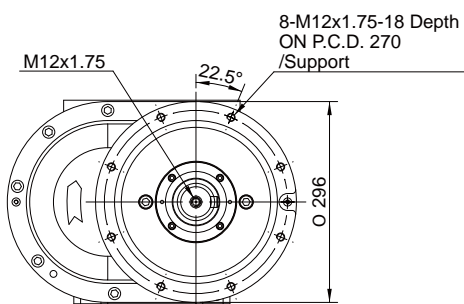
Installation drawing [mm]

weight [kg]

279.3



SECTION A-A
1:2.5



Oil-injected screw compressor stage

EU75(II) Series

Performance data

Performance statements according to ISO 1217

