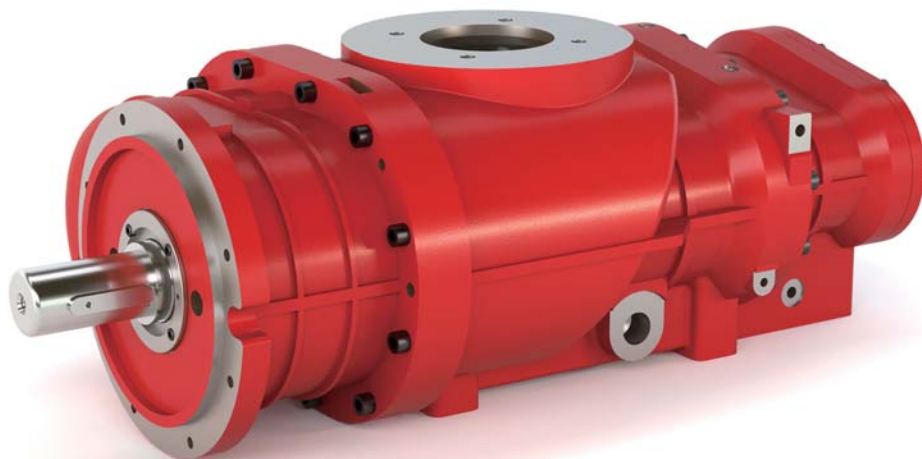


Oil-injected screw compressor stage

EU75(II) Series

Air end data

power consumption at driving	
shaft recommended [kW]	75
volume flow max. [m ³ /min]	15.99
discharge pressure max. [bar a]	15
male rotor speed max. [rpm]	3742
lobe combination	5/6



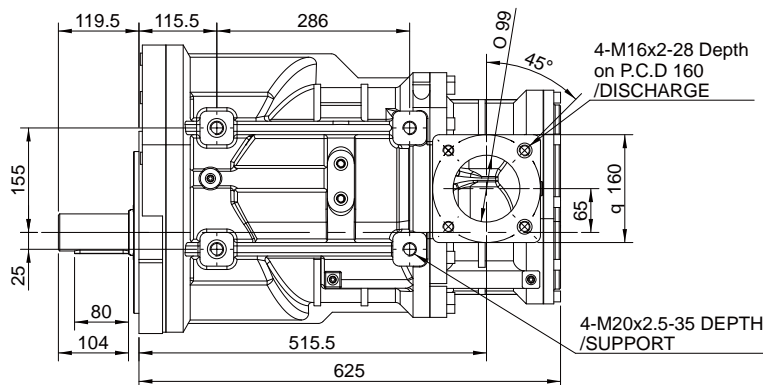
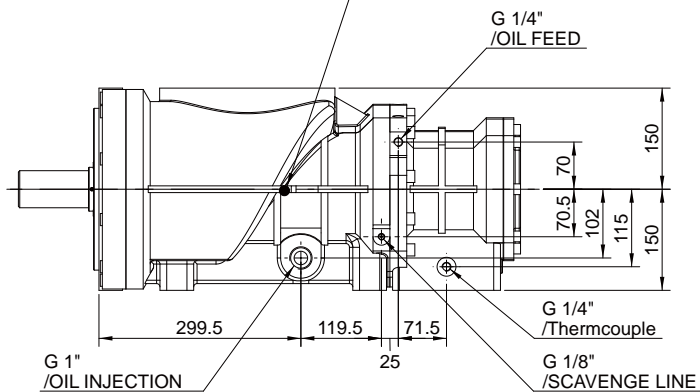
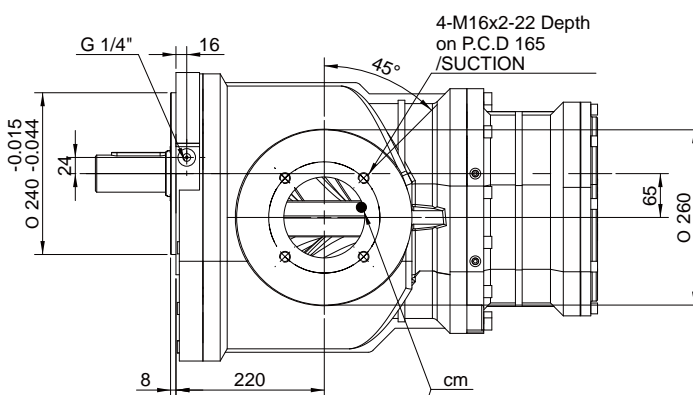
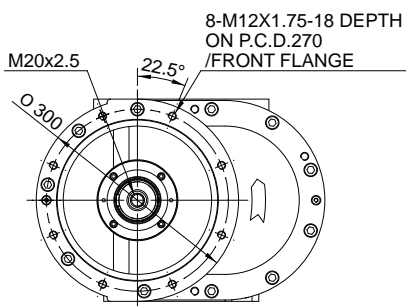
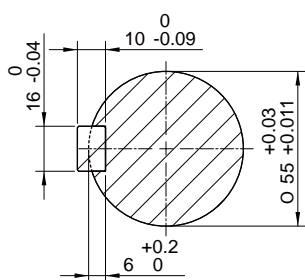
Oil-injected screw compressor stage

EU75 (II)

Installation drawing [mm]

weight [kg]

239.6



Oil-injected screw compressor stage

EU75(II) Series

Performance data

Performance statements according to ISO 1217

