

Oil-injected screw compressor stage

EU55(II) Series

Air end data

power consumption at driving

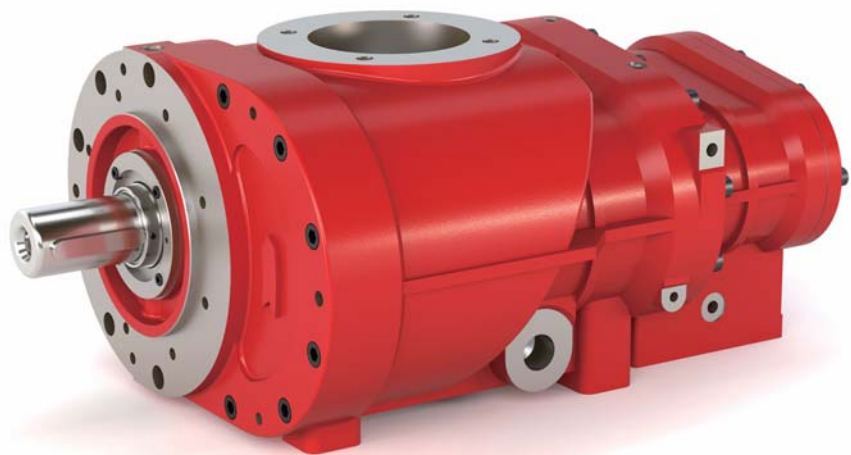
shaft recommended [kW]	55
------------------------	----

volume flow max. [m ³ /min]	14.01
--	-------

discharge pressure max. [bar a]	15
---------------------------------	----

male rotor speed max. [rpm]	3923
-----------------------------	------

lobe combination	5/6
------------------	-----



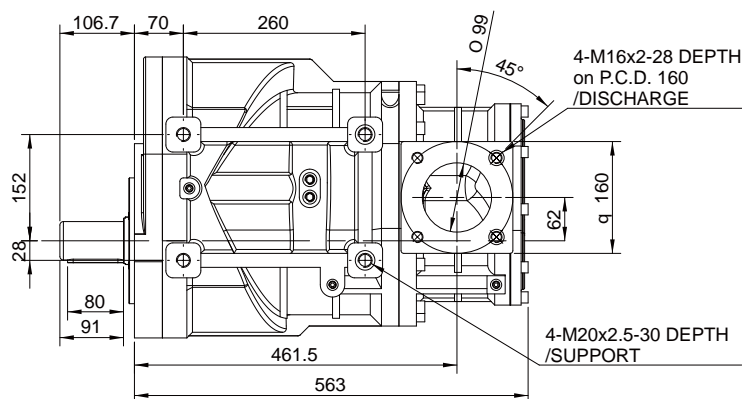
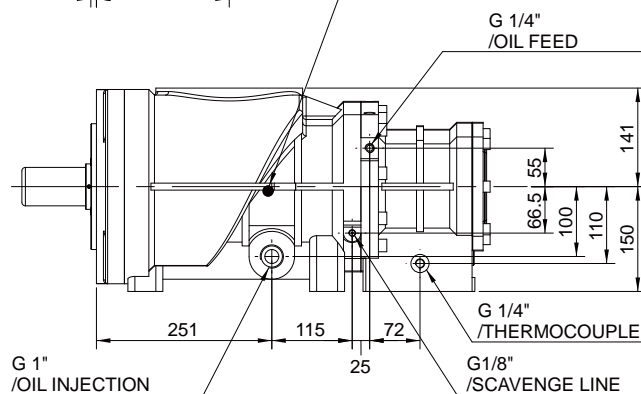
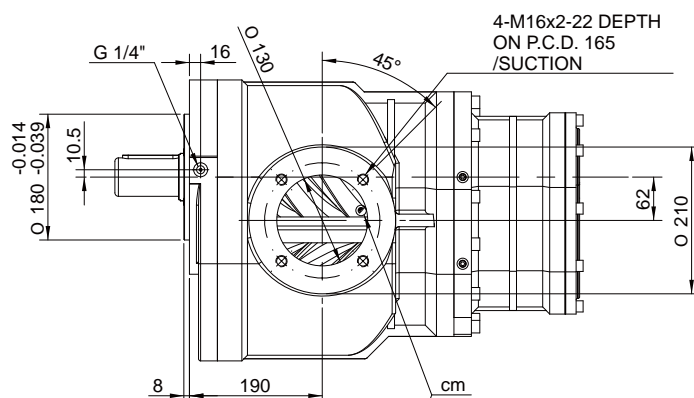
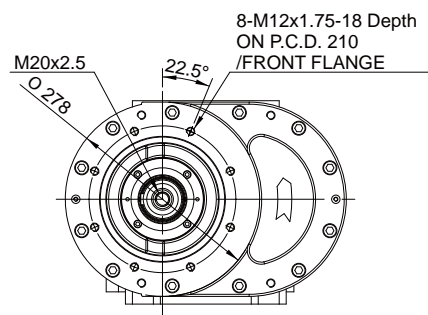
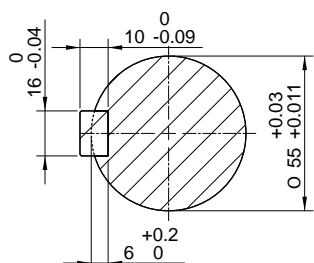
Oil-injected screw compressor stage

EU55 (II)

Installation drawing [mm]

weight [kg]

201.6



Oil-injected screw compressor stage

EU55(II) Series



Performance data

Performance statements according to ISO 1217

