

Oil-injected screw compressor stage

EU45(II) Series

Air end data

power consumption at driving

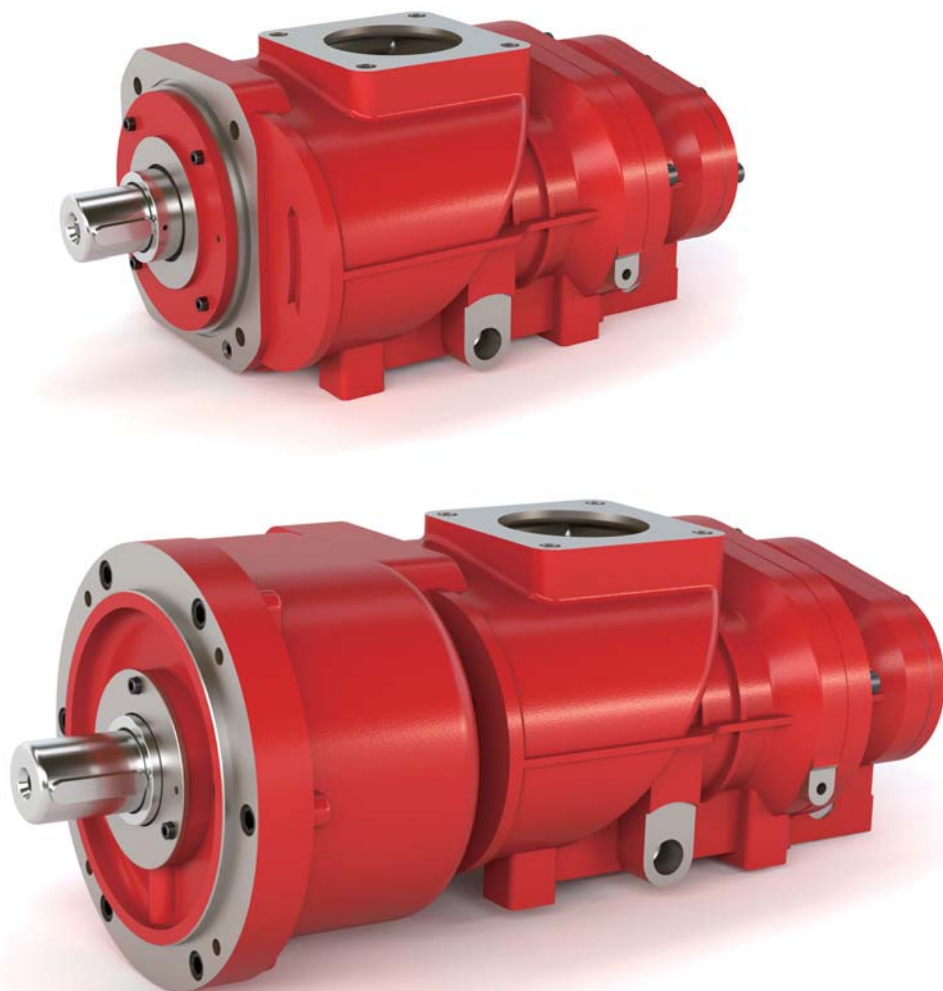
shaft recommended [kW] 45

volume flow max. [m³/min] 8.32

discharge pressure max. [bar a] 15

male rotor speed max. [rpm] 5015

lobe combination 4/5



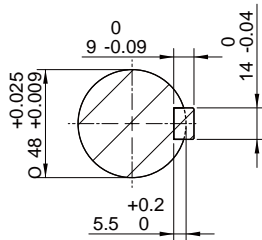
Oil-injected screw compressor stage

EU45G(II)

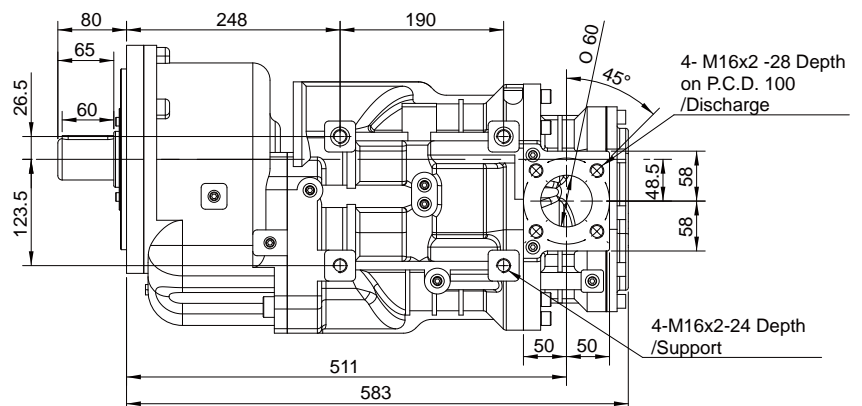
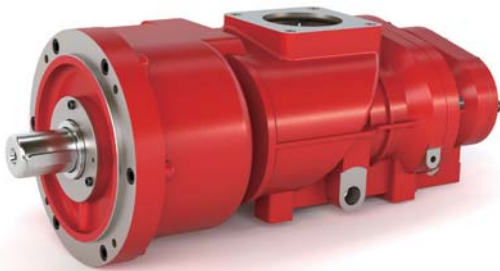
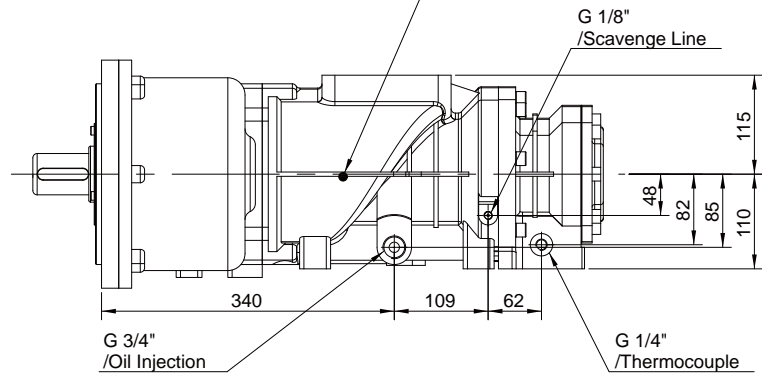
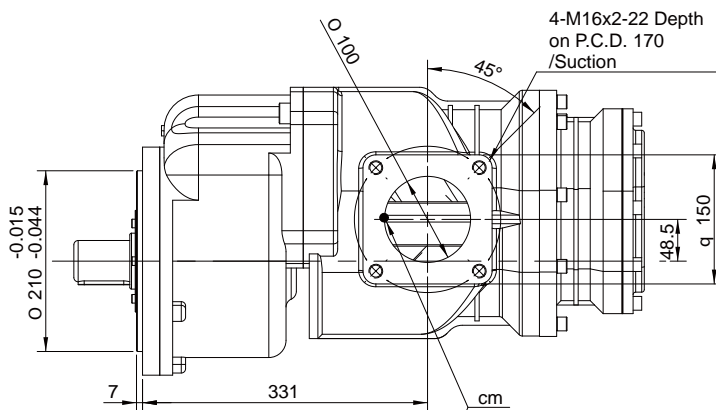
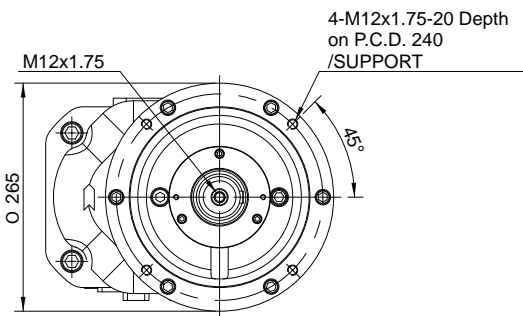
Installation drawing [mm]

weight [kg]

123.4



SECTION A-A
1:2.5



Oil-injected screw compressor stage

EU45(II) Series

Performance data

Performance statements according to ISO 1217

