

Oil-injected screw compressor stage

EU30(II) Series

Air end data

power consumption at driving

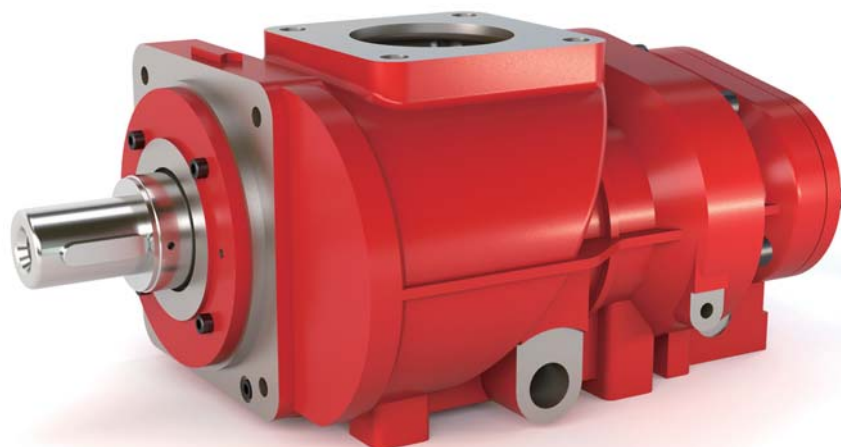
shaft recommended [kW]	30
------------------------	----

volume flow max. [m ³ /min]	5.85
--	------

discharge pressure max. [bar a]	15
---------------------------------	----

male rotor speed max. [rpm]	6083
-----------------------------	------

lobe combination	4/5
------------------	-----



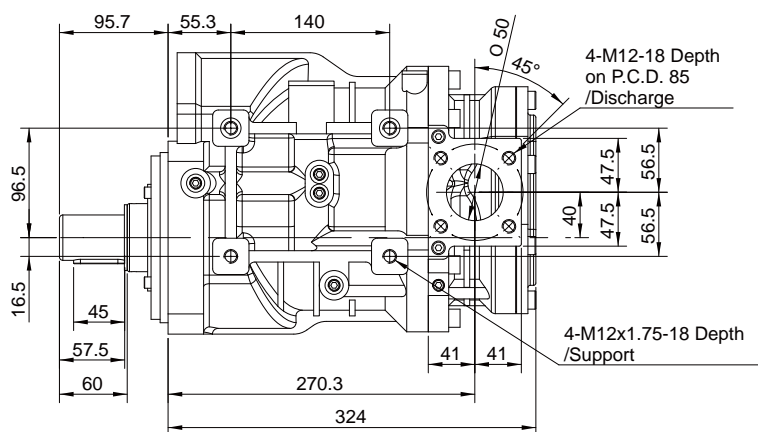
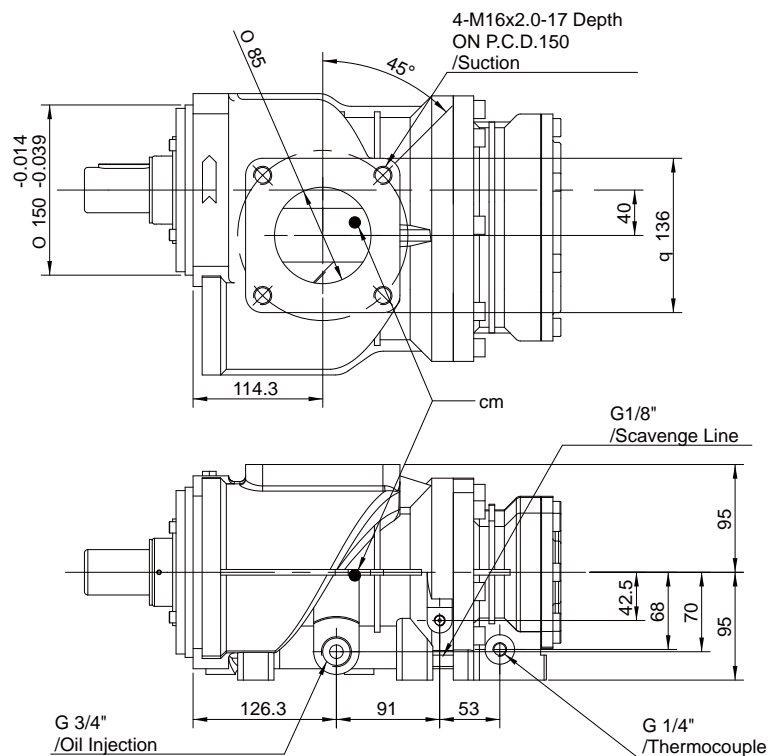
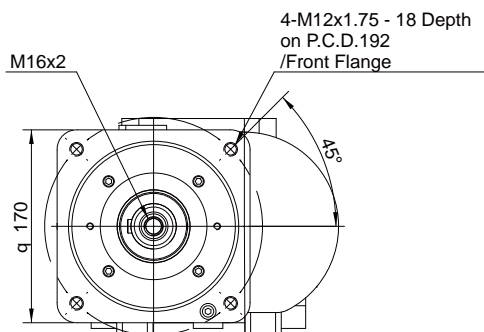
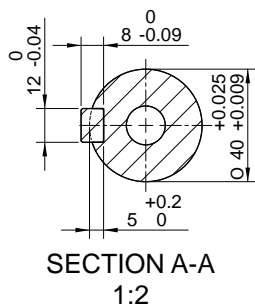
Oil-injected screw compressor stage

EU30(II)

Installation drawing [mm]

weight [kg]

53.8



Oil-injected screw compressor stage

EU30(II) Series



Performance data

Performance statements according to ISO 1217

