

Oil-injected screw compressor stage

## EU160(II)Series

### Air end data

power consumption at driving	
shaft recommended [kW]	160
volume flow max. [m <sup>3</sup> /min]	31.03
discharge pressure max. [bar a]	15
male rotor speed max. [rpm]	2703
lobe combination	5/6



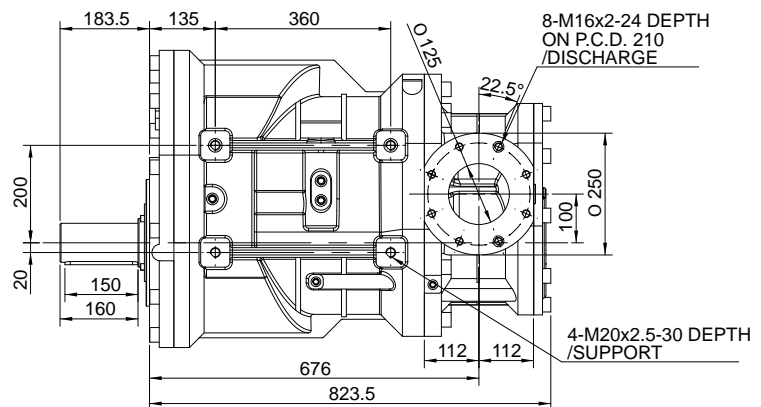
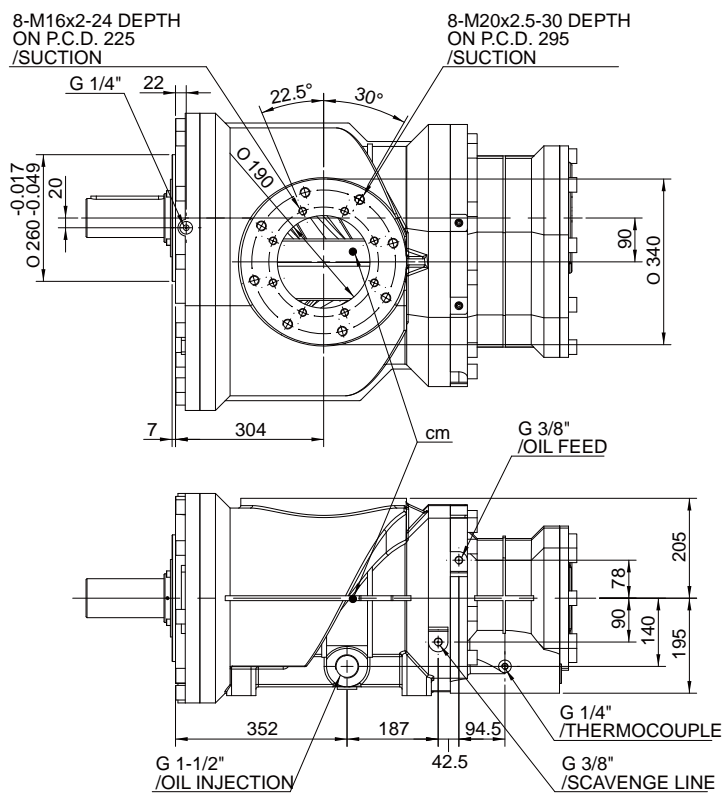
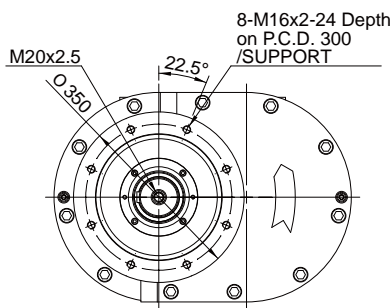
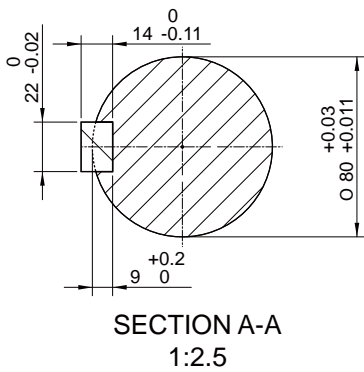
Oil-injected screw compressor stage

# EU160(II)

Installation drawing [mm]

weight [kg]

601.8



Oil-injected screw compressor stage

# EU160(II) Series

## Performance data

Performane statements according to ISO 1217

