

Oil-injected screw compressor stage

## **EU11(II) Series**

---

### **Air end data**

---

power consumption at driving

shaft recommended [kW]	11
------------------------	----

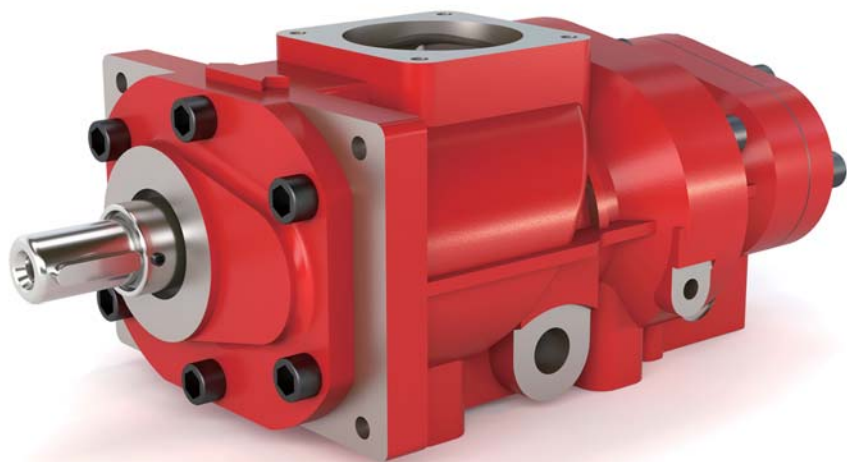
volume flow max. [m <sup>3</sup> /min]	2.82
--	------

discharge pressure max. [bar a]	15
---------------------------------	----

male rotor speed max. [rpm]	8847
-----------------------------	------

lobe combination	5/6
------------------	-----

---



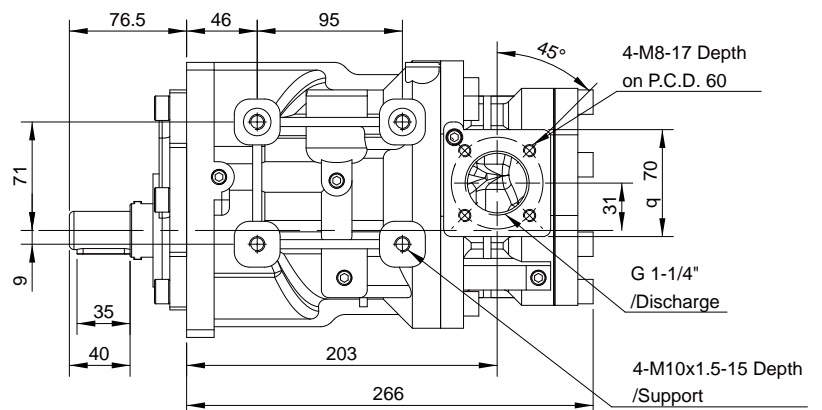
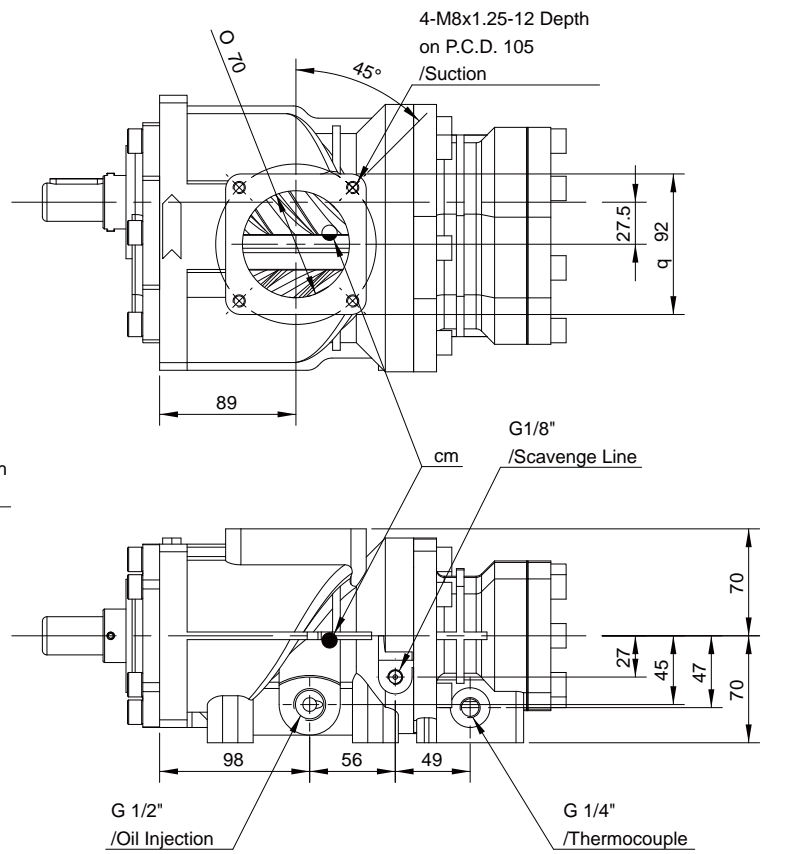
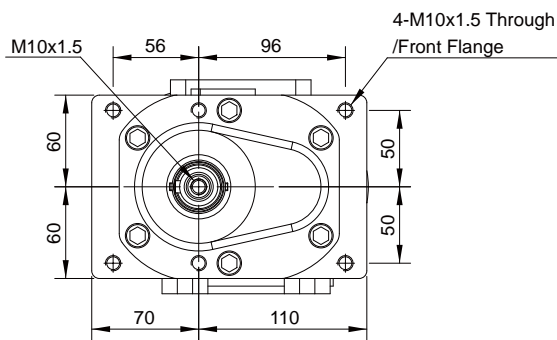
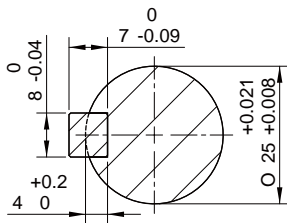
Oil-injected screw compressor stage

# EU11(II)

Installation drawing [mm]

weight [kg]

23.2



Oil-injected screw compressor stage

# EU11(II)Series



## Performance data

Performance statements according to ISO 1217

