

Oil-injected screw compressor stage

EU 5(III) Series

Air end data

power consumption at

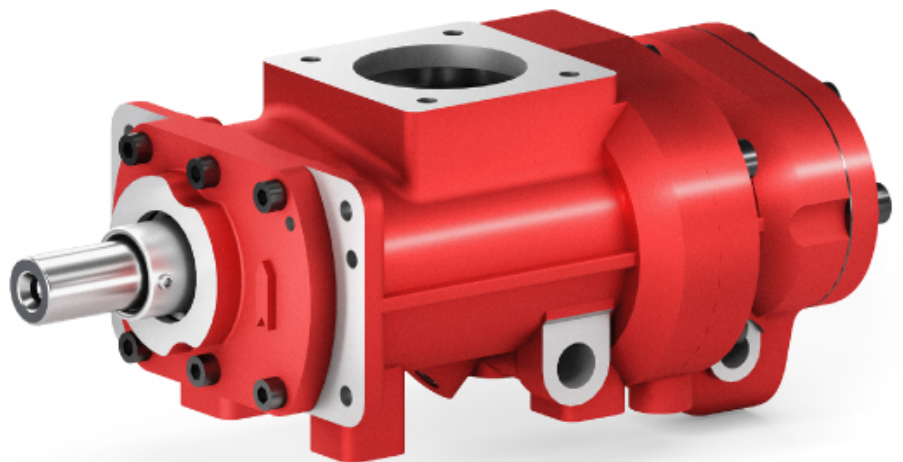
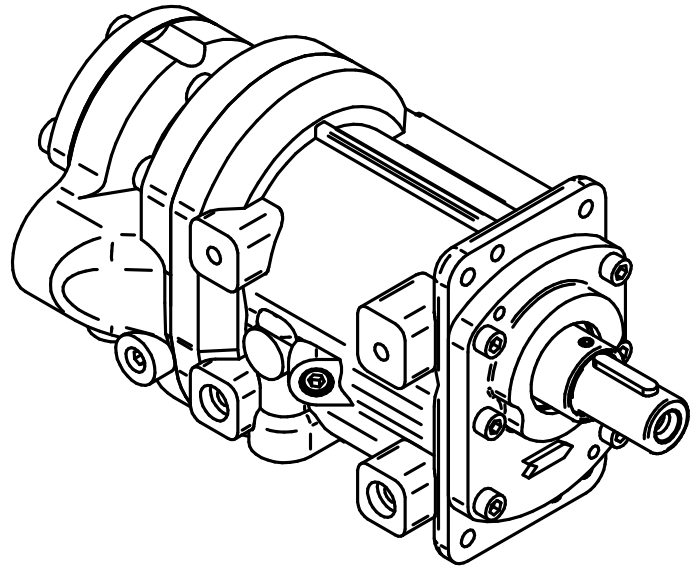
driving shaft recommended [kW] 5

volume flow max. [m³/min] 2.5

discharge pressure max. [bar a] 16

male rotor speed max. [rpm] 8,500

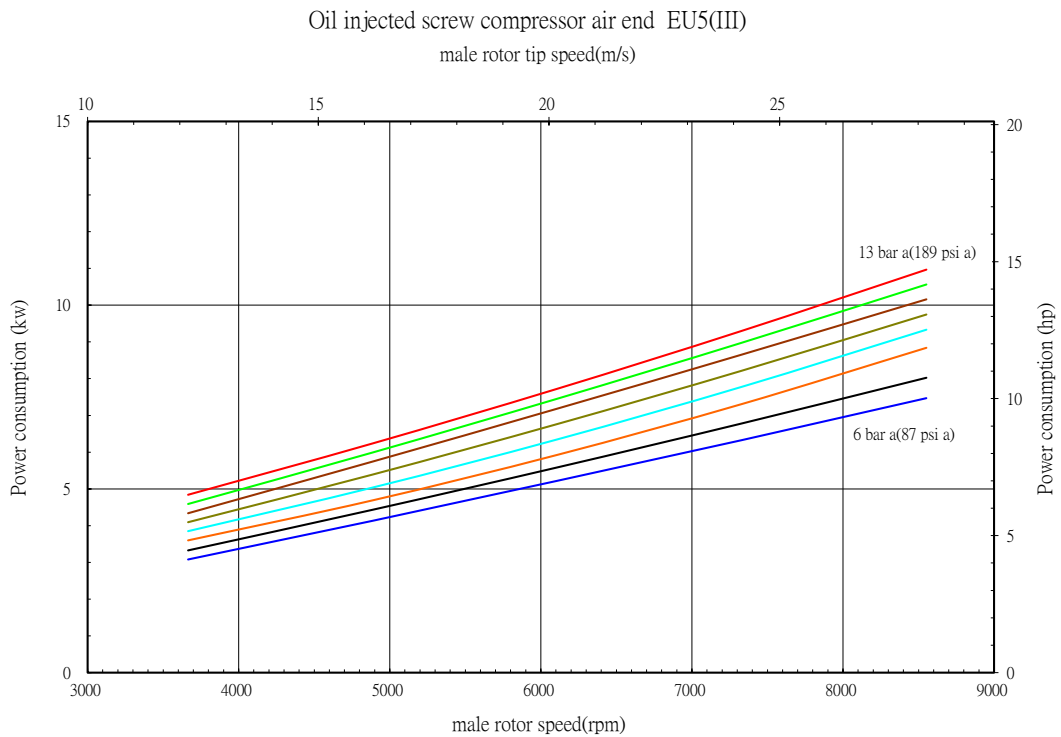
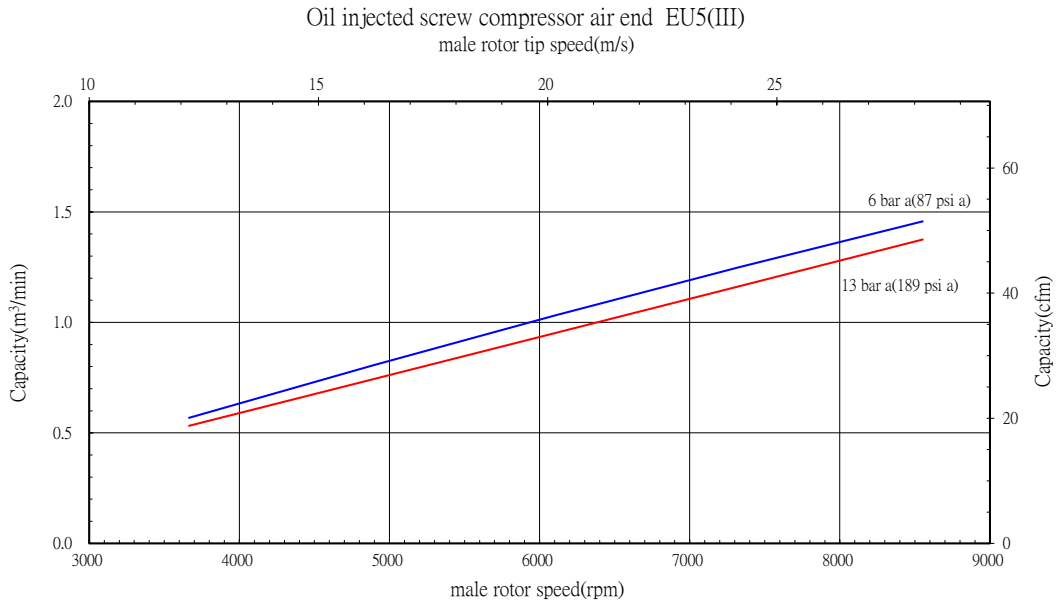
lobe combination 5/6



EU5(III)

Performance data

Performance statements according to ISO 1217



EU5(III)

Installation drawing [mm]

weight [kg]

12

