

Oil-injected screw compressor stage

## EU 160(III) Series

### Air end data

power consumption at

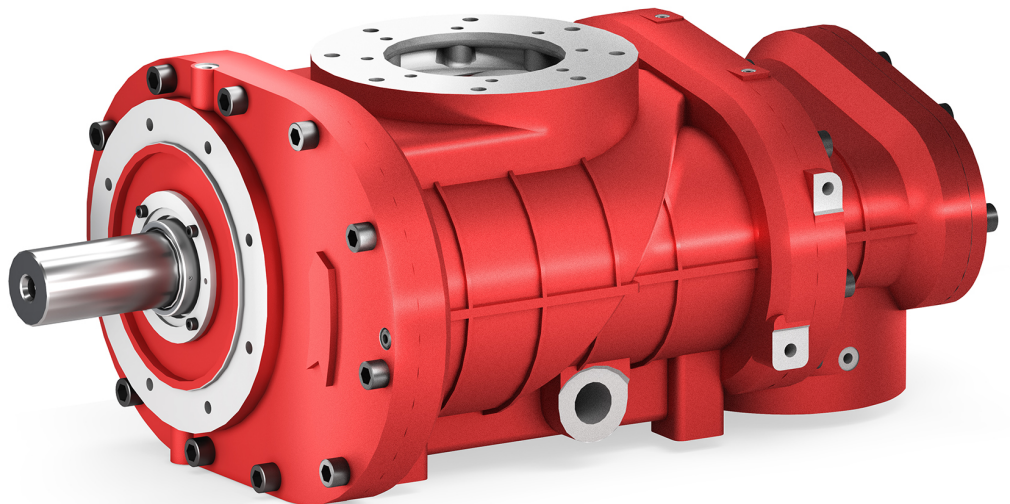
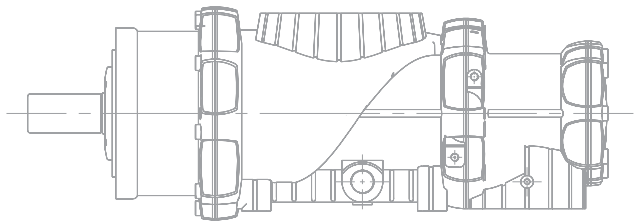
driving shaft recommended [kW] 160

volume flow max [m<sup>3</sup>/min] 31.03

discharge pressure max. [bar a] 15

male rotor speed max. [rpm] 2,703

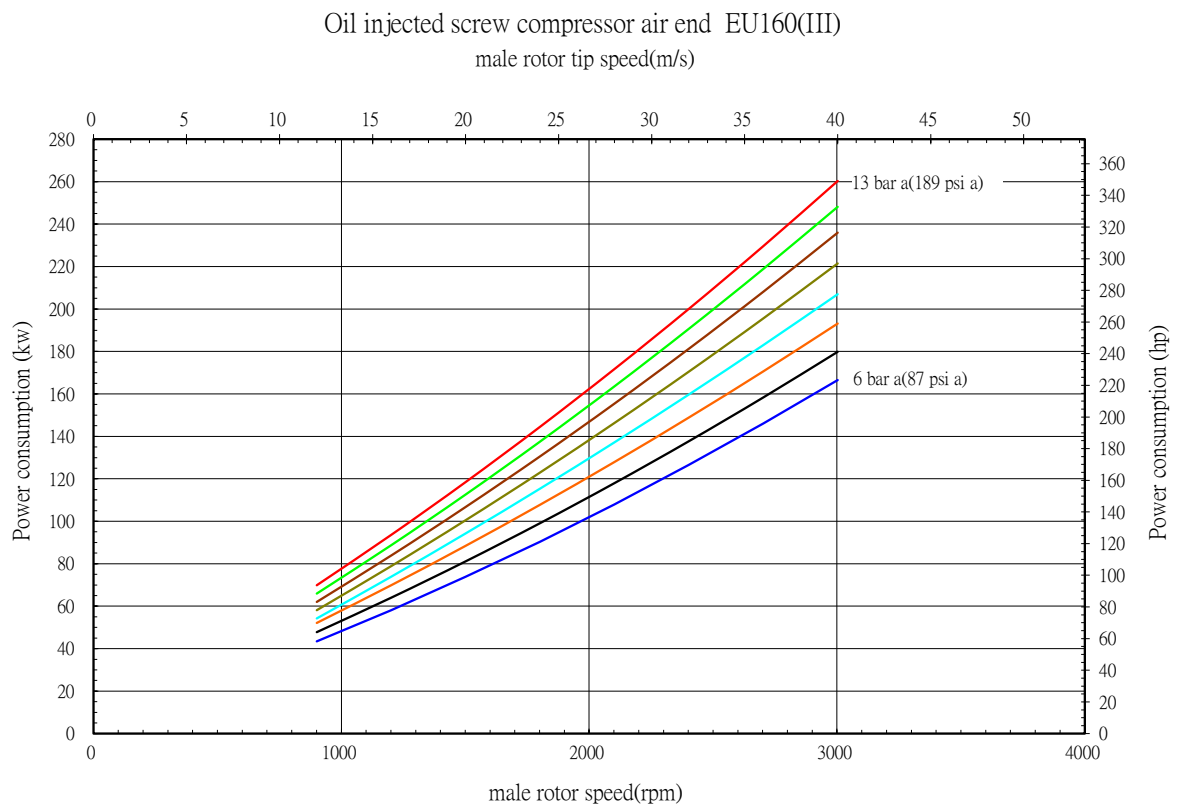
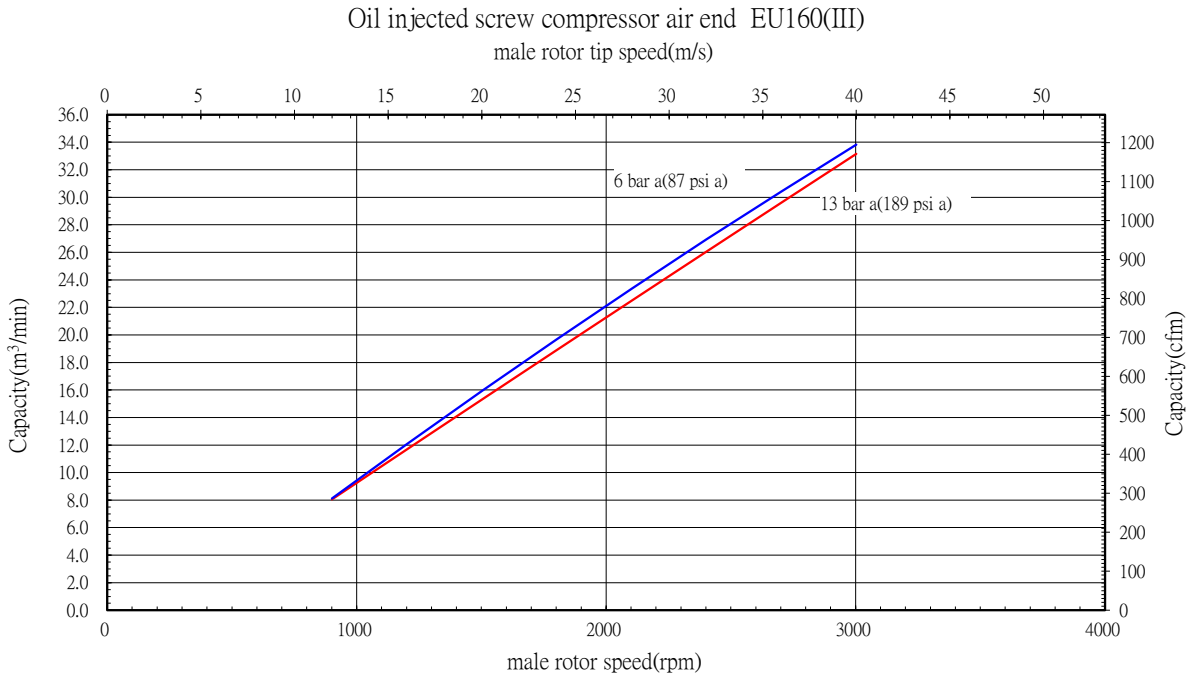
lobe combination 5/6



# EU 160(III) Series

## Performance data

Performance statements according to ISO 1217



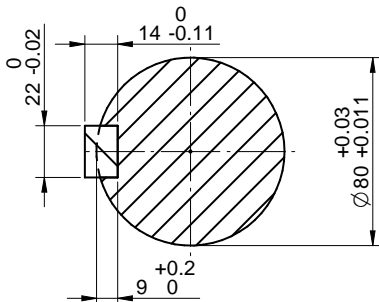
Oil-injected screw compressor stage

# EU 160(III)

Installation drawing [mm]

weight [kg]

563.3



SECTION A-A  
1:2.5

